

## Download and Installation of the KMP Kompamaster 6.2

1.	<p>At first, please download the programme to your computer from <a href="http://www.kmp.com/service/downloads/software.html">http://www.kmp.com/service/downloads/software.html</a> or <a href="http://www.bechlem.de/downloads/kmp/setupkmp.exe">http://www.bechlem.de/downloads/kmp/setupkmp.exe</a> (online version only)</p>
2.	<p><b>To install</b> the programme, open the download file folder where you have just saved the setup file. You start the installation by a double-click on this program file with the left mouse button. Please do not change the suggested file paths. Choose the language when prompted to do so and confirm the EULA licensing terms by a click on "I agree, install". If you press "Cancel", the installation will be aborted.</p>
3.	<p>"Installation successful" will confirm to you that the installation has been completed. If you set a checkmark at "Create Icon on Desktop", an icon on your desktop will be created to start the Kompamaster simply from the desktop. Click on "Finish".</p>
4.	<p>The KMP Kompamaster 6.2 is now ready for use.</p> <p>If you have installed the online version, the Kompamaster must be opened with administrator rights for enabling <b>automatic update runs</b>. To define that the Kompamaster is opened with administrator rights, the following procedure is necessary only once: right mouse-click on the Kompamaster programme symbol – left clicks on properties – compatibility, set a checkmark at "Run this programme as an administrator" – OK.</p> <p>Information on the installation in a network can be found below. Please contact your system administrator.</p> <p>Whenever you start the Kompamaster, the update routine will now start automatically. If new data are available, please follow the online instructions. Updates are executed very quickly.</p>

### Network Installation:

For installing the KMP Kompamaster centrally in a network, set a checkmark in the box for "Network installation for multi user..." when starting the installation. For the path, a directory for which every user has read and write access must be chosen. After the installation, please go to the desktop of each Kompamaster user and set a desktop link on the file "KMPKempa.exe" in the installation directory. The network installation provides the advantage that you need to run updates only once.

### General Notes on the Installation:

- The current version 6.2 overwrites older versions. Should the installation of a new version fail, our programmers recommend to delete the older version first (normally to be found in C:/programmes/KMP KomaMaster).
- If your operating system recommends that your computer be restarted after the program installation, please follow this instruction.

## I've received an Error Message or Warning:

Both KMP Kompamaster versions (online/offline version) carry a safety certificate. It may nonetheless occur that your operating system or antivirus software generate a warning during the installation. If you click on EXECUTE or ALLOW or the like, the installation will nevertheless be executed.

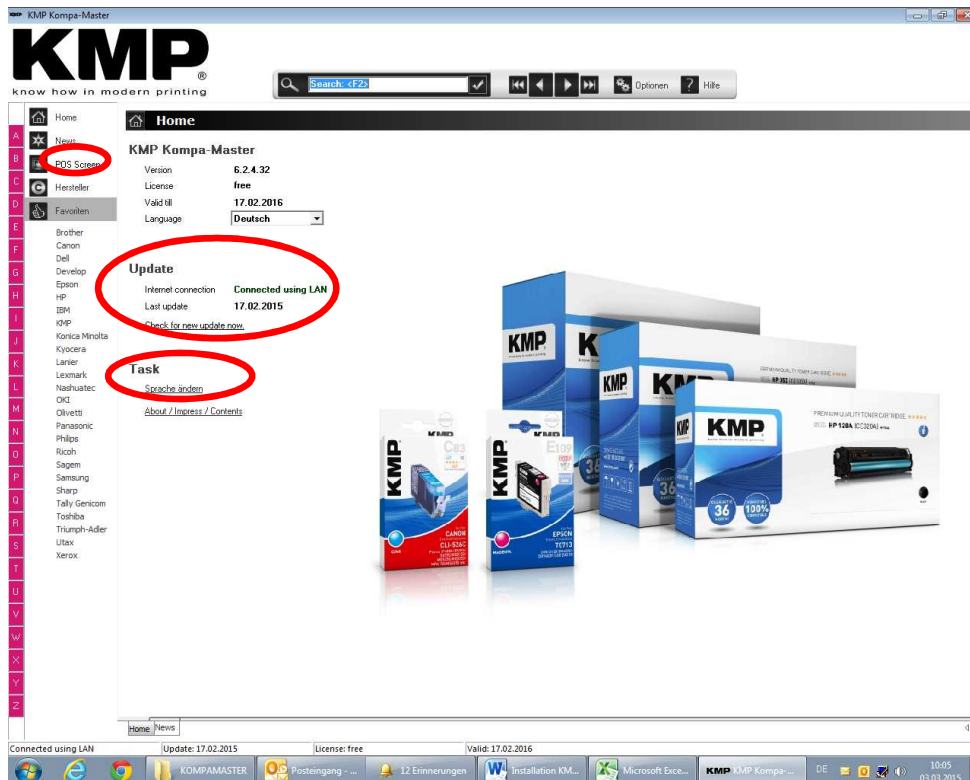
- The KMP Kompamaster has been programmed for 32-bit operating systems. It can be installed and run on 64-bit operating systems, if you allow the installation to continue after the corresponding warning of the operating system.
- Since the Kompamaster accesses a foreign server via the internet for updates and product images, it is possible that your antivirus software classifies this computer application as a potentially unwanted programme (PUP).

## Where do I find the User Manual or the Program Help?

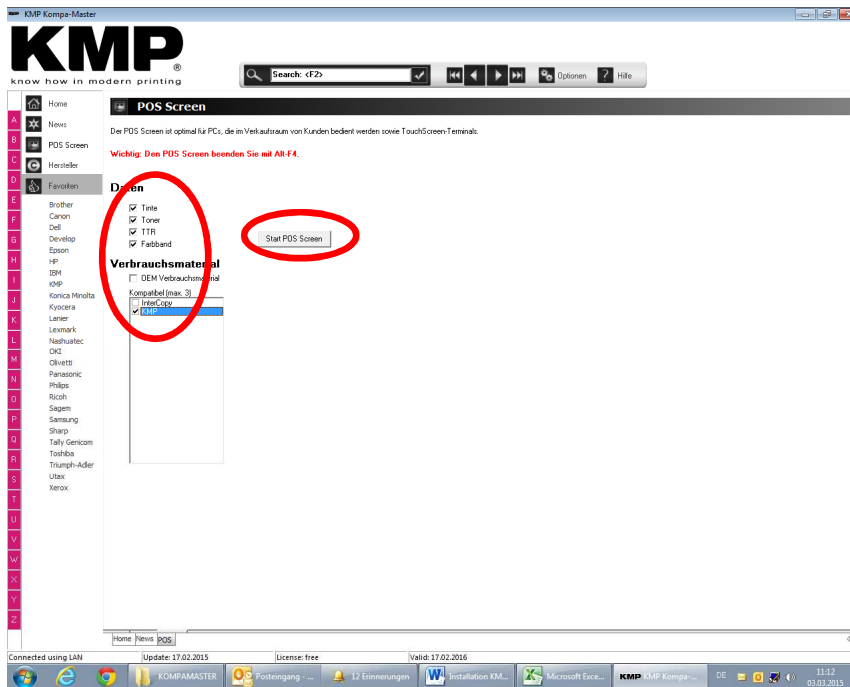
- You can find the user manual with further tips on working with the KMP Kompamaster via a click on „Help“ on the upper right of the search box.

## How to start and customize the POS Screen:

1. Open the Kompamaster in standard mode, choose the language under “Task”.  
If you work with the “online version” which is permanently linked to the data server via the internet, follow the update alert first.



2. Click on "POS Screen" in the upper left corner to start the POS Screen.
3. Set checkmarks for the categories which you'd like to show in your shop and click on "Start POS Screen"



Ready.  
You can close the POS Screen by entering ALT F4.

## **Create an Additional Icon for the POS Screen on Your Desktop:**

(to start the POS Screen directly)

1. Desktop: Right mouse click on the Kompamaster icon, choose “create a new link”
2. Right mouse click on this new link icon, choose properties – link – target, and extend the mentioned target link with “ –POS” (spacebar minus POS). Save and close with “OK”
3. Right mouse click on this new link icon, choose “rename” and rename the new icon into a freely selectable name (for example into “KMP POS Screen”)

For **updates**, regularly open the Kompamaster in standard mode via the “standard” icon “Kompamaster”. The Kompamaster will automatically check for new updates and give an alert, allow the update run then and follow the instruction. The update run is very fast.